

The Kofu Kai Review

The Monthly Newsletter of the Kofu Bonsai Kai Club

MEETING TIME and PLACE

Special Meeting Date: January 23, 2016, 7:00 pm

Anaheim Methodist Church, 1000 South State College Boulevard, Anaheim



It's that time of the year, **DUES ARE DUE**. Your newsletter will discontinue if you have not renewed. **Contact Ryan Cali at the meeting, or when making Annual Dues payments by mail, please use these directions:**

Make Checks out to: KOFU BONSAI KAI, \$20 per individual, or \$25 for couples or two persons at one address. Include your Name, Address, Telephone Number, and e-mail address is mandatory if you wish to receive a newsletter.

MAIL Checks to:

**RYAN CALI
52 Dianthus
Rancho Santa Margarita, CA 92688-1024**

*If you joined during the months of October, November, or December 2015,
you are paid for 2016.*

EXECUTIVE BOARD

Officers

Founding President:

Harry Hirao

President:

*Carol Upston 310-346-4203
jackdaw@earthlink.net*

Vice President:

Open

Recording Secretary:

Open

Treasurer:

Ryan Cali 949-735-3463

Past President:

*Manuel Martinez
manny22816@aol.com*

Board of Directors:

Larry Ragle 949-497-5626

Committees

Badges:

Shari Religa

Benefit Drawing:

Dan and Wanda

Danesi 714-826-5024

Meeting Refreshments:

Kimberly Warner

Membership

Ryan Cali 949-735-3463

Newsletter Editor:

*May McNey 714-738-0879
jmmcney@roadrunner.com*

Pre-Meeting Workshop:

Ryan Cali 949-735-3463

Program Co-Chairs:

Jason Chan

Ron Reekers 714-585-6770

Publicity:

Mike Walsh

Show Co-Chairs:

Anthony Chiusolo 714-998-3420

Mike Viljak 949-642-3577

Sunshine:

Marybel

Balendonck 714-524-0275

Website:

Bob Warner

WWW.KOFUKAI.ORG

January 23 Demonstration

PETER MACASIEB



Photo by Carol Upston

For this month's meeting, we're happy to host **Peter Macasieb**. **Peter Macasieb** learned from both **Tak Shimazu** and **Harry Hirao**. **Peter** is best known for his shohin trees. Those that have visited his garden can attest to this. He belongs to many prestigious clubs including Nanpu Kai and the California Bonsai Society. He is also very active in the community doing demonstrations and workshops for many local clubs as

well as the GSBF convention. His shohin displays can also be found at many bonsai shows.

During this month's demonstration, **Peter** will go over scion grafting with shimpaku juniper foliage. The demonstration follows his afternoon workshop so members that are unable to attend the workshop will still be able to see the finished grafted trees in the evening.

---Jason Chan

GRAFTING WORKSHOP WITH PETER MACASIEB

Bring your juniper and **Peter** will graft it with *itoigawa* scions.

When: 12:00 noon on our special meeting day, January 23

Where: The east classroom at the United Methodist Church (our regular meeting place)

Cost: \$50.00 per person will include grafting scions. There will be a limit on the number of scions on each tree, to be determined by **Peter**.

Please contact **Carol Upston** to reserve a space in this workshop, first come first served.

Email her at carolupston@me.com or text her at 310-346-4203 or call and leave a message and she'll get back to you.

Preference will be given to paid up Kofu Bonsai Kai members. If for some reason we can't fill the workshop we'll open it up to the general bonsai community.

The Beginning of a New Year

2015 was eventful for many of us. Our founder and sensei **Harry Hirao** passed on, and we remembered him at a beautiful ceremony and dinner at his Buddhist temple. We enjoyed another year of our happy association with the Bowers Museum and had a very successful show. Many of us had personal trials and tribulations that kept us from spending as much time as we'd like to on our trees and our club. Some of our members are feeling the effects of their years, it's true. I noticed at our Christmas party and at other clubs' holiday events that many familiar faces were absent this year, and I hope we'll be seeing them returning to active good health soon. On the up side, we've welcomed quite a few new members during the year, many of them youngish, and they seem to be attending meetings and events regularly.

Looking forward, I need to make a personal request of all of you. We need a few more people to step up and offer to take over some of the positions of responsibility of the club. **Dan** and **Wanda Danesi** have served as raffle chairmen since ever, and it would be nice if we could find someone to take over that job. It's an easy job and the main requirement is that you be able to attend all meetings or if you can't attend, that you can pass the raffle tickets and tumbler thing to someone who can. It does not require any storage or transport of actual raffle items, just selling the tickets.

We also need to find a replacement for our worthy program chair, **Jason Chan**. **Jason** has taken over the editorship of *Golden Statements* magazine for Golden

State Bonsai Federation and that will take a lot of his time. He is happy to continue for now but we need an eventual replacement. This is a position where you can really make a difference in the club by choosing what the programming will be. It's a great way to get to know everyone in the local bonsai universe.

And, I really need to find a willing and enthusiastic person to be my vice president and eventually to be president. I know it seems intimidating, but it's a wonderful thing to be able to contribute to an active and creative organization like Kofu Bonsai Kai and to help it continue. **Manny Martinez** and I have been working together to run the club for the past few years with Manny mainly taking care of events and me doing the other administrative jobs. It's not that it is such a huge amount of work, more like knowing what needs to be done when, and making sure it gets done.

If you feel that you would be interested in becoming vice president and in effect entering a training period for leadership of the club, please talk to Manny or me.

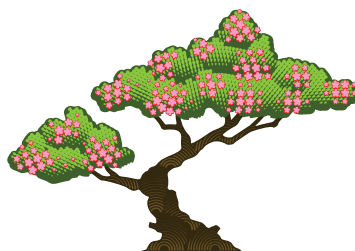
I'd also like to mention that raffle revenues are down and that it takes quite a good chunk of money to operate this organization with hall rentals, demonstrator fees, raffle expenses and occasional one off expenses such as our contributions to the services for **Harry Hirao**. Please be generous in your donations to the raffle and in your purchases of raffle tickets.

Thank you, and I wish you all a fabulous 2016!

---Carol Upston

Important Announcement

Due to a rise in the cost of renting the facilities, we will be having most of our meetings from now on in the east classroom rather in the main hall at the church



2016 CALENDAR



The 2016 Kofu Bonsai Kai Calendar will be available at the meeting. The calendar features the members' trees from the 2015 Bowers show. Cost to members will be \$8.00 each.

CHRISTMAS PARTY

Many thanks to the following raffle donors to the Christmas Party:

*Gary Lai
Carol Upston
Bill and Lois Hutchinson
David and June Nguy
Tony Nguyen
Dee Fann
Dr. Walter Johnson
Larry and Nina Ragle
Wendy Tsai
Dan and Wanda Danesi
Peter Macasieb
Manuel Martinez*

KOFU BONSAI KAI - BONSAI IDEAS

BY MARTY MANN

JANUARY

If deciduous trees start to sprout, bring them gradually into sunlight. If the tree is kept in a shaded area, new growth will be long, leggy and weak. Be careful to protect this new growth from any surprise cold or frost that causes dieback. When warm weather comes--so does the ever-present insect population. Be prepared to spray early with a good commercial insecticide or miticide. Follow manufacturer's directions for your mixtures.

This is the time to spray deciduous trees with a dormant spray (lime sulfur) before any sign of new growth appear. Avoid the soil surfaces in the pots as well as the pots themselves. Dripping chemicals harm the tender roots and leave unsightly stains on the pots.

Survey the finished trees in bonsai pots. Are they still a proper match in size or color to the tree? Has the maturity and styling of the tree changed it enough to consider

repotting into a new pot? Is it taller, wider, fatter? Now is the time to redesign 'completed' trees. Make a list of the trees that will require repotting. Place a marker in the pots that require attention this year for identification. Begin with the conifers, followed by the deciduous trees, then the flowering and fruiting trees. Begin while they are still in a dormant stage or just beginning to emerge. Some of this activity can wait until later in February. Go easy on any pruning that may be required--particularly on the early transplants. Let the branches mature. Wait until the sap begins to flow before you do any serious pruning or pinching of the new growing tips.

Another important activity at this time involves your tools. Sort them out. Sharpen all cutting edges, remove accumulations of rust and tar stains by using the new Japanese erasers, dip into a bleach solution to purify, then oil all surfaces for protection. You're ready to go.

By Marty Mann

This article has been extracted from the recently published book called 'Bonsai Ideas.' © By Marty Mann. Material is not to be copied without publisher or author's permission. JAN 2012

CALENDAR OF EVENTS

February 5-7 **California Shohin Seminar** at Hotel Mission de Oro, 13070 S. Highway 33, Santa Nella, CA 95322. Registration forms and schedule of events are available at www.calshohin.org or contact Randi Keppeler at 650/598-0127, email: calshohin@yahoo.com.

February 27- **Bonsai-A-Thon XX** Annual Fundraiser for the GSBF Collection at The Huntington at The Huntington Library and Botanical Gardens, 1151 Oxford Road, San Marino, CA. Admission to the event is free with Bonsai-A-Thon "early bird" registration between 8-9 am. Event hours are 8-4:30 both days. Pancake breakfast, a tour hosted by Jim Folsom (Director of the Gardens), demonstrations, lunch, bonsai exhibits, large sales area, raffle, and auction. Sunday only: A behind-the-scenes tour of The Huntington Bonsai Nursery with Ted Matson. For more information, contact Bill Wawrychuk at (818) 790-9415 or b_wawrychuck@yahoo.com.

- April 23-24 **San Diego Bonsai Club** Spring Bonsai Exhibition at the Casa Del Prado, Room 101, Balboa Park, from 10 am to 5 pm both days with demonstrations at 11 am and 1 pm. Free admission. Bonsai pots and trees for sale, as well as other bonsai-related items. For more information, visit www.sandiegobonsai.com.
- May 21-22 **Bonsai Club of Santa Barbara** Annual Bonsai Exhibition at the Santa Barbara Botanic Gardens, 1212 Mission Canyon Road, Santa Barbara, from Saturday 11 am to 4 pm, Sunday 10 am to 4 pm. Demonstrations at 1 pm both days. Plant sale by club. Native plants suitable for bonsai in the Botanic Garden's nursery. For more information, contact Tom Post (805) 964-2717, email tompostart@yahoo.com or visit www.santabarbarabonsai.org.



SPECIAL THANK YOU TO EVERYONE

**who came to the Christmas
party and contributed special
foods to the buffet table and
for purchasing benefit
drawing tickets for items
displayed.**

It was great fun!



JANUARY PRE-MEETING WORKSHOP

Want to start off 2016 improving your bonsai artistry and technique? Beginners: Wondering how to get started in bonsai and have many questions? Have questions on how to prepare and display your tree at the Annual Show?

No matter what your objectives are, come to the pre-meeting workshop from 4 pm – 6 pm before the January 23 meeting. Let expert Kofu members **Ryan Cali**, **Paul Vasina**, and **Harley Newman** help you with your bonsai questions and objectives.